

AREAS OF  
PRACTICE INDEX  
ADMINISTRATIVE LAW-  
ZONING LAW

ALPHABETICAL INDEX  
SERVICES, SUPPLIES  
CONSULTANTS  
INDEX

## Case Study

### Government Application Services

This City Revenue Department is participating in the Federal/State Modernized e-File (MeF) program, under the IRS Modernized e-File architecture. The City's Revenue Department is supporting BIRT EZ, BIRT Long and NPT tax forms for the year 2013. This initiative was taken up with the aim of obtaining more city tax submissions and to remove the overhead of manual intervention involved in paper returns. MeF uses new architecture for electronic filing and introduces a largely automated, real-time and scalable e-file system. Data-Core executed the design and development of this MeF project.



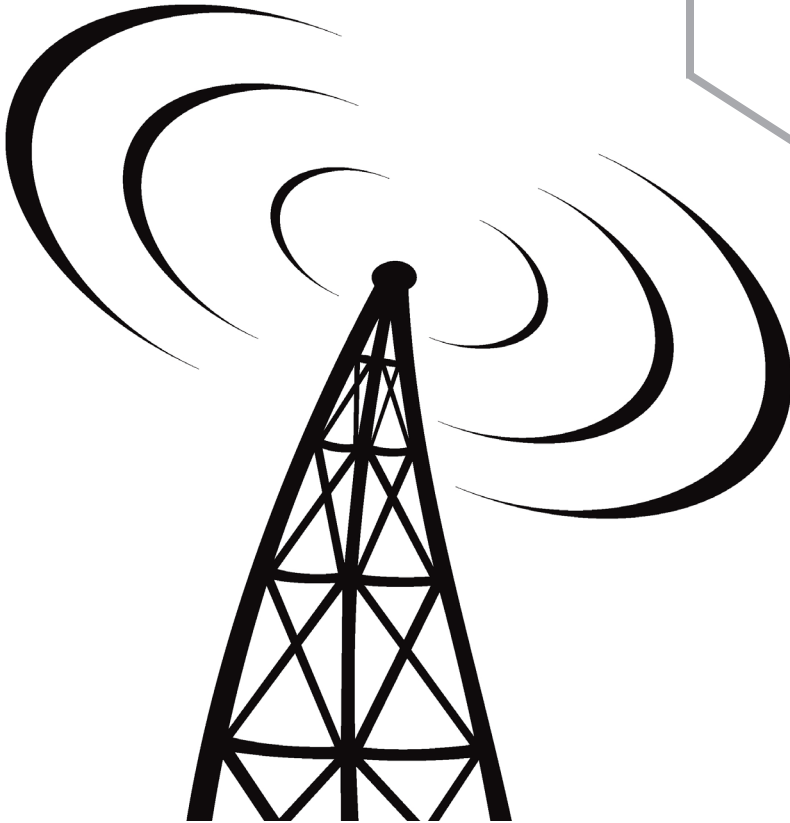
#### Services Performed by Data-Core:

- Analyzed, designed and implemented a customized IRS Modernized e-File solution framework for the City Revenue Department.
- Established direct communication with the TIGER body for the schema development and its approval process.
- Aided the City's legal team in preparing the IRS Safeguard Report.
- Assisted the City's IT team in setting up the testing and production environment for the program.
- Helped all vendors to begin filing returns in a test system and subsequently complete a smooth transition into production.

Implemented  
in 2 Months

### Technologies used by Data-Core:

- C#
- ASP .NET
- Visual Studio.NET 2012
- SQL Server 2012
- WCF
- XSD, XML, XSLT



Customizable  
solution  
framework

Easy  
installation

Based  
on latest  
technology

Data-Core Systems has successfully developed a fully automated system under the IRS Modernized e-File architecture for the Revenue Department of this City. With the MeF system not yet implemented by several cities, Data-Core worked efficiently to accumulate a complete insight about the system, overcoming various conceptual constraints.

*Discover the Data-Core Advantage and see how we can help you.*



**USA Headquarters**  
1500 JFK Blvd., Suite 624  
Philadelphia, PA 19102  
Tel: 215-243-1990  
Fax: 215-243-1978  
[www.datacoresystems.com](http://www.datacoresystems.com)

**Bristol, USA**  
111 Sinclair Road,  
Bristol, PA 19007  
Toll Free: 877 300 9529  
Tel: 267 569 0800  
Fax: 215 702 1871

**Bensalem, USA**  
Two Greenwood Square  
3331 Street Road  
Suite 275  
Bensalem, PA 19020  
Toll Free: 877 300 9529

**Las Vegas, NV**  
1771 East Flamingo Road  
Suite B100  
Las Vegas, NV 89119  
Toll Free: 877 300 9529  
Tel: 702 795 9559